
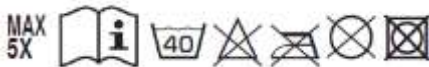


## Scheda tecnica indumento/Garment technical data sheet 04630N.02

Identificazione articolo/Item identification					
Cod. comm.le Industrial Starter/ IS commercial item code:	<b>04630N</b> (04643N + 04648N)	Cod. art. fornitore/ Supplier item code*:	<b>4630N</b>	Cod. fornitore/ Supplier code:	<b>000527</b>
Cod. colore Industrial Starter/ Industrial Starter colour code:	<b>012</b> (giallo fluo / yellow fluo) <b>032</b> (arancio fluo / orange fluo)	<input checked="" type="radio"/>	Articolo del catalogo/Item from catalogue		
		<input type="radio"/>	Articolo personalizzato/Customized item		
		Codice cliente/Customer code:			
Nome articolo/Item name:	<b>Parka AV triplo uso / Hi Vi triple use parka</b>				

Descrizione tecnica dell'articolo/Technical item description			
	Composizione/ Fabric composition	Colore/colour (Pantone)	Peso del tessuto/ Fabric weight [g/m <sup>2</sup> ]
<b>Art. 04643N ( Giacca esterna) / Item 04643N ( Outer jacket)</b>			
Tessuto esterno principale/ Main outer shell fabric:	<b>300D poliestere oxford spalmato PU con trattamento "Teflon" 5000mm 3000 mvp / 300D poly Oxford PU coated with "Teflon" treatment 5000mm 3000 mvp</b>	<b>Giallo fluo / Yellow fluo Arancio fluo / Orange fluo</b>	<b>185</b>
Fodera corpo / Body lining:	<b>100% poliestere mesh / 100% mesh polyester</b>	<b>Giallo fluo / Yellow fluo Arancio fluo / Orange fluo</b>	<b>65</b>
Fodera maniche / Sleeve ining:	<b>210T poliestere taffeta / 210T taffeta polyester</b>	<b>Giallo fluo / Yellow fluo Arancio fluo / Orange fluo</b>	<b>58</b>
<b>Art. 04648N ( Gilet interno imbottito) / Item 04648N ( padded inner jacket)</b>			
Tessuto esterno corpo / Body outer shell fabric :	<b>300D poliestere oxford spalmato PU con trattamento "Teflon" 2000mm / 300D poly Oxford PU coated with "Teflon" treatment 2000mm</b>	<b>Giallo fluo / Yellow fluo Arancio fluo / Orange fluo</b>	<b>185</b>
Tessuto maniche / Sleeve fabric :	<b>240T Pongee / 240T Pongee</b>	<b>Blu marino/ Navy blue</b>	<b>75</b>
Imbottitura maniche / Sleeve pudding :	<b>100 % poliestere / 100% polyester</b>	<b>Bianco / White</b>	<b>180</b>
Accessori/Accessories:	<b>Bande retroriflettenti 3M 8906 ( cm 5), tasca porta telefono / Mobile phone pocket, 3M 8906 ( cm 5) retroreflective bands</b>		
Loghi e ricami/ Logos & embroideries:			
Taglie/Sizes:	<b>S, M, L, XL, XXL, 3XL</b>		

## Scheda tecnica indumento/Garment technical data sheet 04630N.02

Descrizione tecnica dell'articolo/Technical item description	
Imballo/Packages:	<i>n. 5 pz in un cartone imbustati singolarmente / n. 1 piece per polybag, n. 5 pcs per export carton</i>
Istruzioni lavaggio/Care label:	
Note/Notes:	<b>Art. 04648N ( Gilet interno imbottito): maniche staccabili / Item 04648N ( Padded inner jacket): detachable sleeves</b>

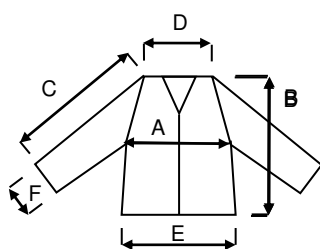
Conformità alle norme CE/Conformity with EC standards			
Cat. DPI/PPE category:	II	Norme CE e livelli di protezione/EC standards and protection levels:	
		Art. 04643N ( Giacca esterna) / Item 04643N ( Outer jacket) : <b>EN 20471 : 2013 + A1:2016 ( 3 ), EN 343:2003 + A1:2007 ( 3 3 )</b> Art. 04648N ( Gilet interno imbottito) / Item 04648N ( Padded inner jacket) : <b>EN 20471 : 2013+ A1:2016 (2)</b>	
Certificato d'esame UE del tipo n° / UE Type-examination certificate No.:	<b>2777/13530-01/E00-00</b>	Data/Date:	<b>25/10/2019</b>
Ente notificato/Notified body:	<b>SATRA Technology Centre</b>	N°/No.:	<b>2777</b>
Lingue nota informativa/Manufacturer's notes languages:	<b>IT/EN/ES/CZ/PL/FR/PT/SK/HU/RS/ HR/LT/LV/SI/DE/GR/RO/EE</b>		

	Misure delle taglie/Size measurements [cm]					
Art. 04643N / Item 04643N Taglia/Size <sup>1</sup> :	S	M	L	XL	XXL	3XL
A. Torace/Chest <sup>1</sup> :	62	64	67	70	73	75
B. Lunghezza tot./Back Length <sup>1</sup>	83	85	88	91	94	97
C. Manica/Sleeve <sup>1</sup> :	60	62	64	66	68	70
D. Spalle/Shoulder <sup>1</sup> :	50	52	54	56	58	60
E. Fondo/ Bottom <sup>1</sup> :	62	64	67	70	73	75
F. Polsino/Sleeve opening <sup>1</sup>	17	17.5	18	18.5	19	20

	Misure delle taglie/Size measurements [cm]					
Art. 04648N / Item 04648N Taglia/Size <sup>1</sup> :	S	M	L	XL	XXL	3XL
A. Torace/Chest <sup>1</sup> :	59	62	65	67	70	72
B. Lunghezza tot./Back Length <sup>1</sup> :	68	70	72	74	76	78
C. Manica/Sleeve <sup>1</sup> :	64	66	68	70	72	74
D. Spalle/Shoulder <sup>1</sup> :	48,5	50,5	52,5	54,5	56,5	58,5
E. Fondo/ Bottom <sup>1</sup> :	59	62	65	67	70	73
F. Polsino/Sleeve opening <sup>1</sup>	16	16,5	17	17,5	18	18,5

## Scheda tecnica indumento/Garment technical data sheet 04630N.02

### Disegno e foto/Drawing and photo



art 04648N ( Giacca interna) /  
Item 04648N ( Inner Jacket)

Resp. acquisti/  
Purchases responsible:

Data/Date:

26/10/19